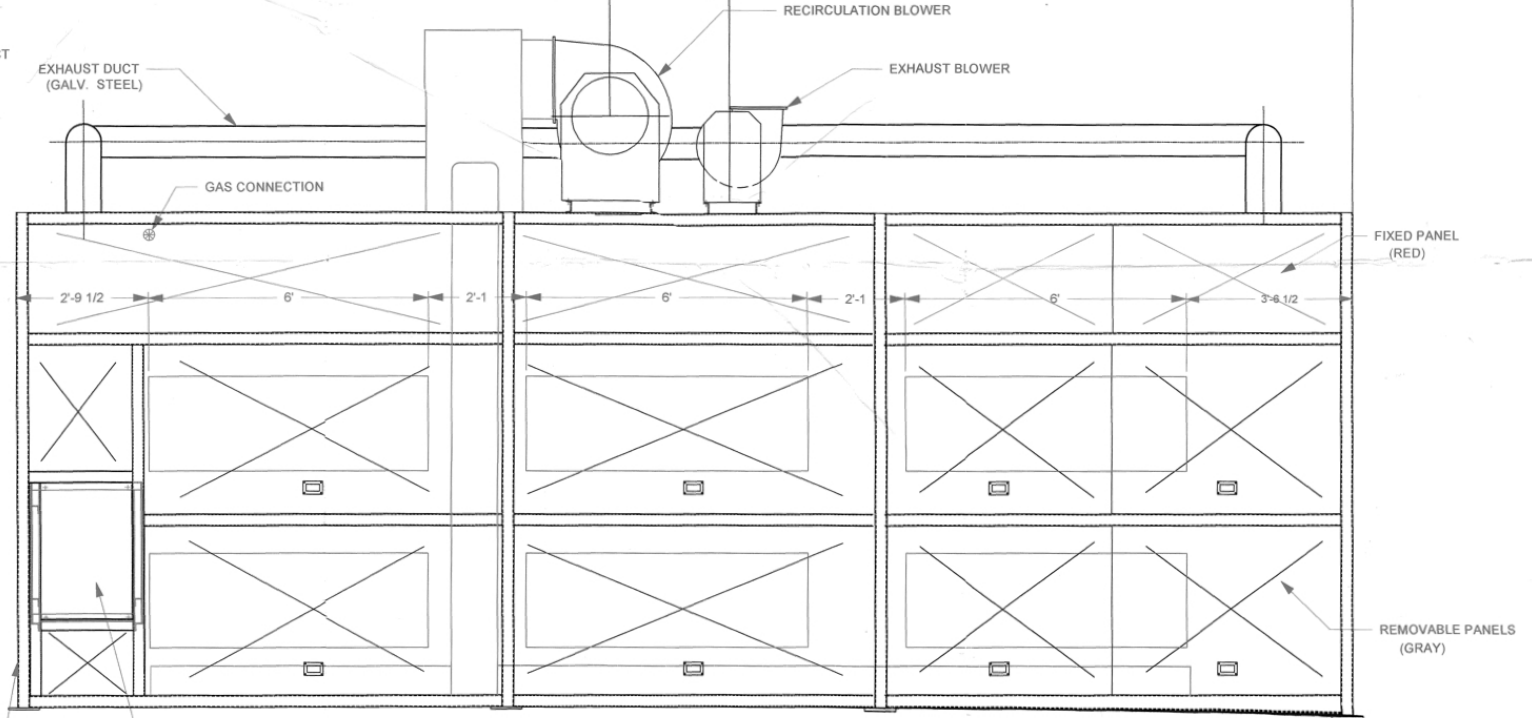
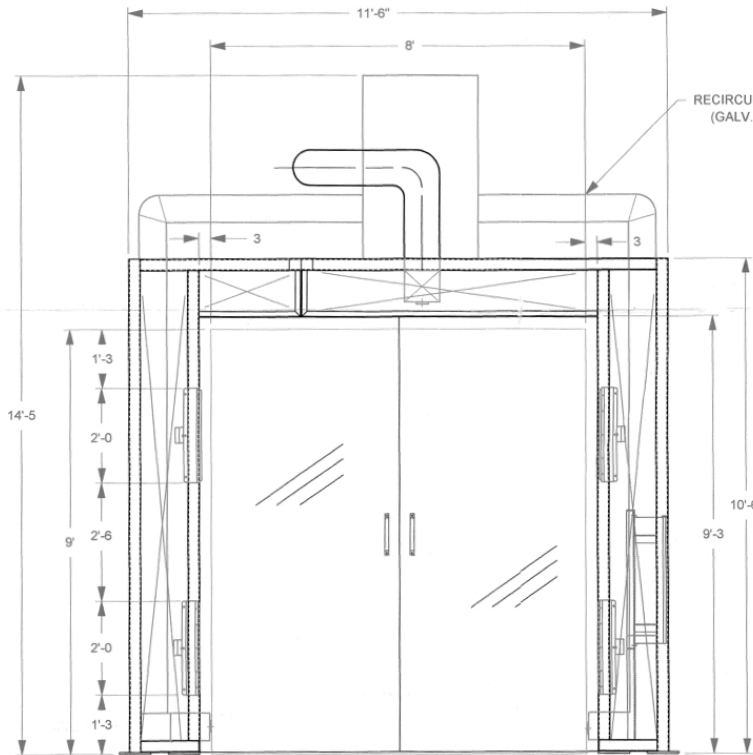
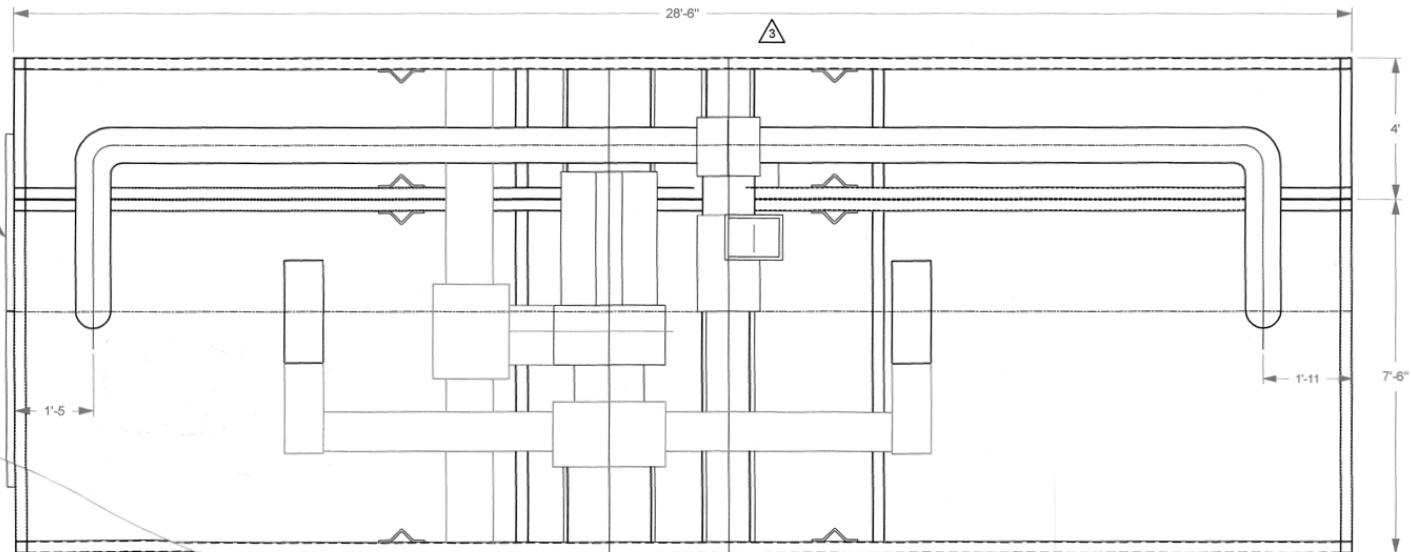


NOTE:
THESE ISSUES NEED TO BE VERIFIED BY THE CLIENT

- CONTROL PANEL LOCATION (SEE ABOVE)
- DESIRED PRODUCT FLOW DIRECTION (SEE ABOVE)
- GAS CONNECTION POINT ON OVEN (SEE ABOVE)
(MUST BE LOCATED CLOSE TO CONTROL PANEL)
- GAS PRESSURE COMING TO OVEN 9" W.C.
- GAS PIPE N.P.T SIZE COMING TO OVEN 1 1/4 NPT.
- BUILDING DOOR OPENING SIZE (NOT AN ISSUE)

DOOR



CAPACITY: 864,000 BTU/hr AT FULL GAS FLOW

12 - BX24 x 72 G-SERIES CATA-DYNE EMMITTERS
NATURAL GAS, 7"W.C. PRESSURE
208 VOLT

POWER REQUIREMENT:
1-208 VOLT, 3 PHASE CIRCUIT
WITH 125 AMPS. BREAKER

EXHAUST BLOWER: TCF BCV 135 CLASS 2
1500 C.F.M.; 1/2 HP
STATIC PRESSURE 1/2"
208 VOLTAGE, 3 PHASE

RECIRCULATION BLOWER:
TCF BCV 165 CLASS 2
5000 C.F.M.; 5 HP
STATIC PRESSURE 3"
208 VOLTAGE, 3 PHASE

*FRAMEWORK PRIMED AND FINISHED IN ONE COAT RED ENAMEL

| | | |
|---|--|----------|
| ⚠ | DIMENSION 28'-6" WAS 26'-6" AS PER CUSTOMER REQUEST | 06.05.98 |
| ⚠ | RECIRCULATION BLOWER WAS TCF BCV 182; EXHAUST BLOWER WAS TCF BCV 122 | 29.04.98 |
| ⚠ | DRAWING REVISED AS PER CUSTOMER REQUEST | 09.04.98 |
| ⚠ | ORIGINAL ISSUE | 31.03.98 |